



# ALUPREM<sup>®</sup> SR-100 MES

## Alumina Monohydrate

**Description**

ALUPREM SR-100 MES is a multi-functional filler for use in coatings, gel coats and solid surface applications. Benefits include improved scratch and mar resistance, low water up-take, improved mechanical properties and excellent exterior durability. Good resin compatibility and minimal effect on curing facilitate use in a variety of polymer systems.

**SR-100 MES**

**CHEMICAL ANALYSIS (Typical)**

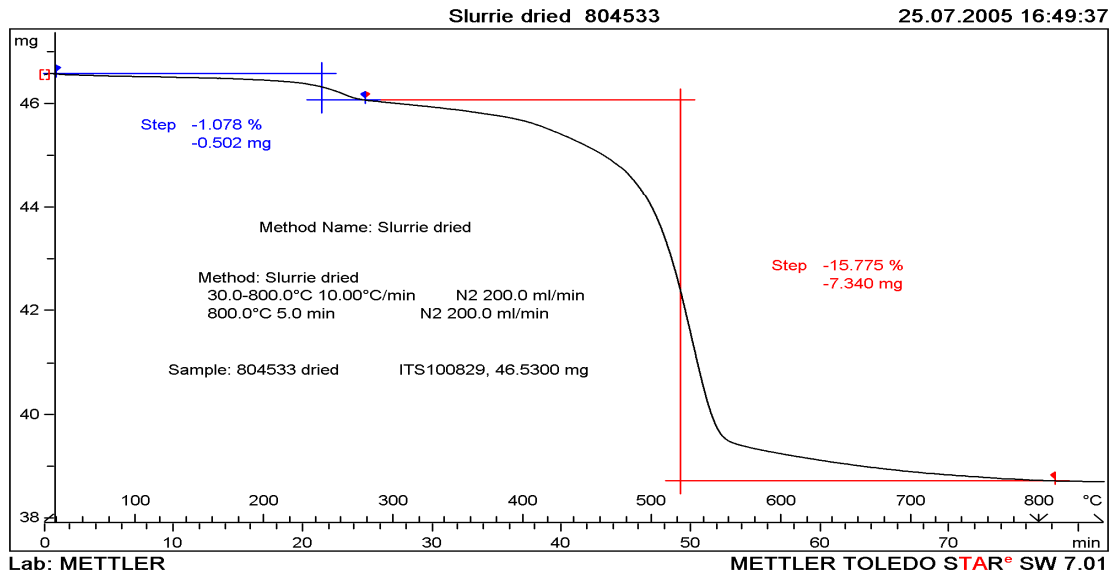
AlO(OH) <sub>3</sub> content, %	None
AlO(OH), %	≥ 99.1
Na <sub>2</sub> O, %	≤ 0.08
SiO <sub>2</sub> , %	≤ 0.02
Fe <sub>2</sub> O <sub>3</sub> , %	≤ 0.03
Moisture Content (105° C), %	< 0.1
Loss on Ignition (LOI @ 1200° C), %	17

**PHYSICAL ANALYSIS (Typical)**

Particle Size (laser, Sympatec) - d <sub>50</sub> , (µm)	2 - 4
Specific Density, (g/cm <sup>3</sup> )	3.0
Brightness	93.0
Bulk Density, (kg/m <sup>3</sup> )	700
Conductivity, (µS/cm <sup>2</sup> )	< 100
Hardness (Mohs)	4.0
Refractive Index	1.7

ALUPREM® SR-100 MES Alumina Monohydrate

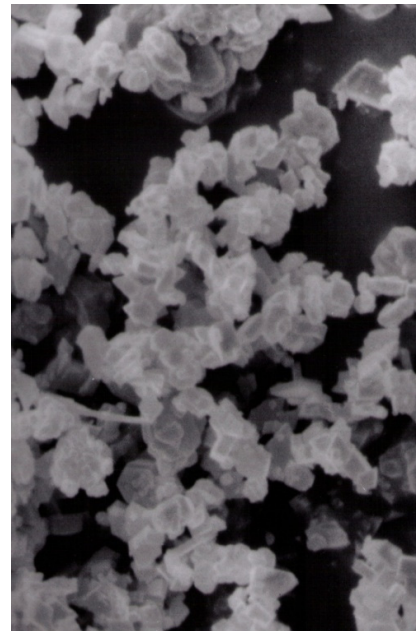
TGA Analysis:



ALUPREM SR-100 MES gradually releases its bound water between 300-550°C (as indicated above), the phased release profile enhances the compound flame resistant performance.

Performance Benefits Include:

- Improves scratch and mar resistance
- Low moisture up-take
- Excellent exterior durability
- High temperature stability >300°C / 572°F
- Flame retardant / smoke suppressant
- Faster gel time & low blushing (Solid Surface)
- Better coating hardness
- Improved mechanical properties
- Excellent flow behavior / throw
- Good resin compatibility
- Minimal effect on curing
- High brightness



The information herein is believed to be correct and reliable; however, no warranty is given concerning the accuracy of these data, merchantability or fitness for a particular use.

Rev 8.21