

HITOX GRAY mixes with White TiO₂ and Carbon Black

Note: Htx Gr = HITOX GRAY Wht = White TiO₂ Blk = Carbon Black (Degussa Sp. 100)



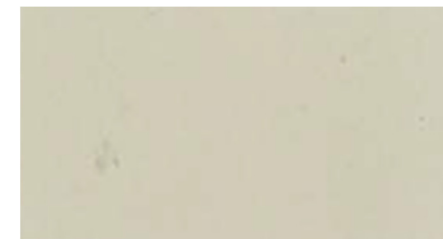
100% Htx Gr



80% Htx Gr : 20% Wht



60% Htx Gr : 40% Wht



50% Htx Gr : 50% Wht



40% Htx Gr : 60% Wht



20% Htx Gr : 80% Wht



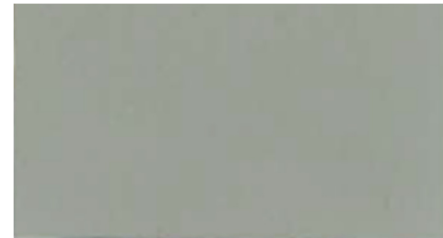
100% Htx Gr
+ 1.2% Blk



80% Htx Gr : 20% Wht
+ 1.2% Blk



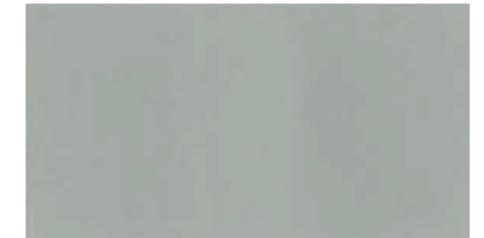
60% Htx Gr : 40% Wht
+ 1.2% Blk



50% Htx Gr : 50% Wht
+ 1.2% Blk



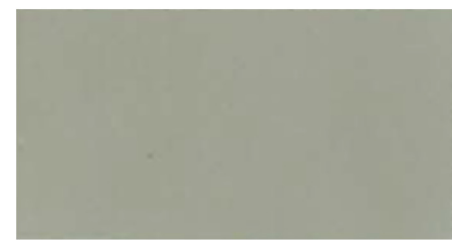
40% Htx Gr : 60% Wht
+ 1.2% Blk



20% Htx Gr : 80% Wht
+ 1.2% Blk



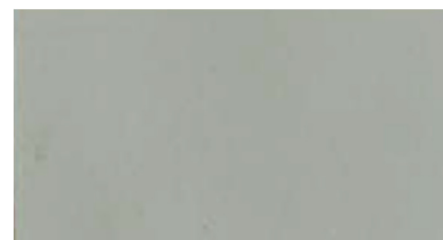
100% Htx Gr
+ 0.8% Blk



80% Htx Gr : 20% Wht
+ 0.8% Blk



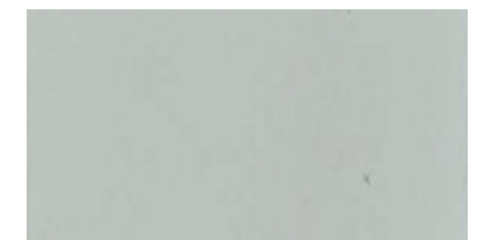
60% Htx Gr : 40% Wht
+ 0.8% Blk



50% Htx Gr : 50% Wht
+ 0.8% Blk



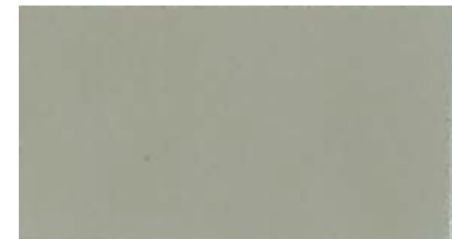
40% Htx Gr : 60% Wht
+ 0.8% Blk



20% Htx Gr : 80% Wht
+ 0.8% Blk



100% Htx Gr
+ 0.5% Blk



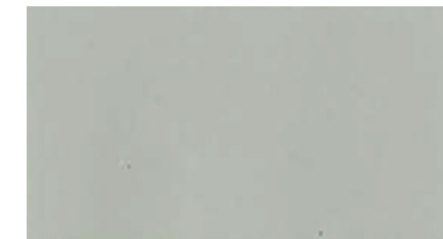
80% Htx Gr : 20% Wht
+ 0.5% Blk



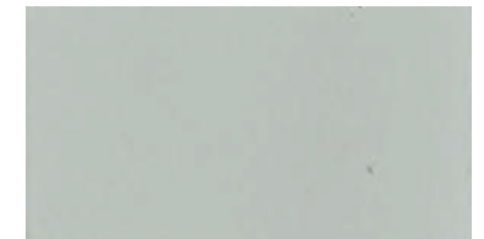
60% Htx Gr : 40% Wht
+ 0.5% Blk



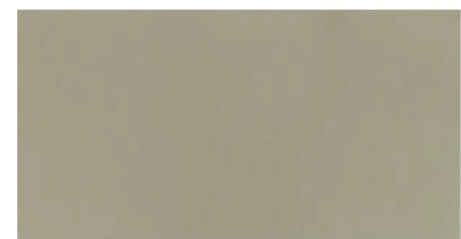
50% Htx Gr : 50% Wht
+ 0.5% Blk



40% Htx Gr : 60% Wht
+ 0.5% Blk



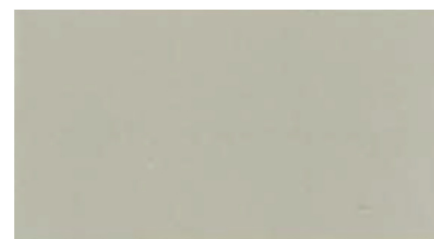
20% Htx Gr : 80% Wht
+ 0.5% Blk



100% Htx Gr
+ 0.2% Blk



80% Htx Gr : 20% Wht
+ 0.2% Blk



60% Htx Gr : 40% Wht
+ 0.2% Blk



50% Htx Gr : 50% Wht
+ 0.2% Blk



40% Htx Gr : 60% Wht
+ 0.2% Blk



20% Htx Gr : 80% Wht
+ 0.2% Blk